

Unit4 HCM - Core HR - Employee Management

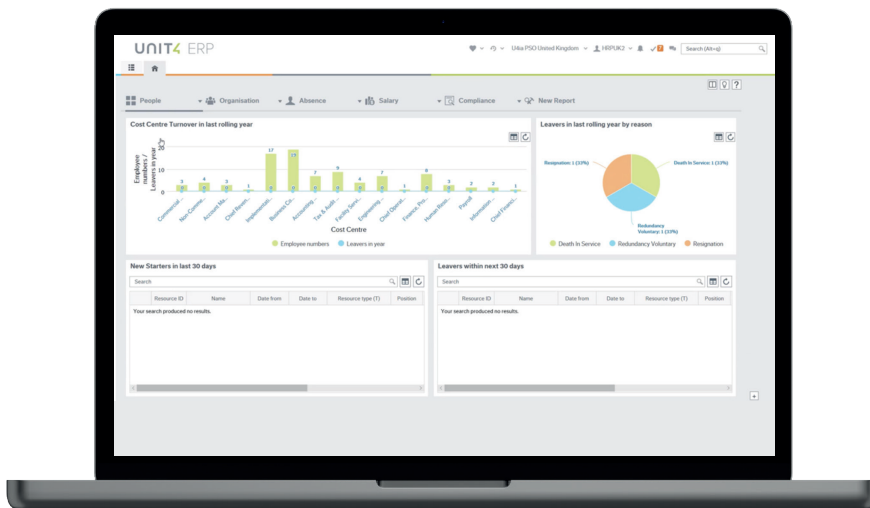
Take control of your global workforce's future



Unit4 HCM is an integrated and intuitive suite of solutions, designed to meet your organization's needs wherever you are on your digital HR transformation journey. From operational needs such as payroll and absence management, through to delivering meaningful employee experiences, such as on-line learning, performance and reward management, all the way through to delivering real time business insight to drive your people strategy. Built for Professional Services, Public Sector and Non-Profit organizations to provide an 'out of the box experience', drive performance, enable agility, and deliver an exceptional employee experience to attract, develop and retain talent.

Key Capabilities

- Centralize all employee information and related documents
- Let your people change or update personal information with self-service functions
- Stay HR legislation compliant with alerts and notifications
- Define standard and employee-specific work plans
- Reporting and analytical capabilities
- Automate approvals and workflows



Manage your global workforce from one place with Unit4 HCM Core HR (Employee Management). With a single employee record across the entire Unit4 platform, you can register and maintain all your people's details from personal information to engagement levels, competency levels and performance. You can also source the key insights and reports you need to support your Diversity, Equity and Inclusion ambitions and requirements.



Understand, plan and act!

Integrate employee information with other Core HR modules, Payroll, Talent Management, Compensation Planning and Unit4 Financial Planning and Analytics. Enabling you to strategically plan, become more efficient and deliver an exceptional employee experience.

<p>Everything in one place</p> <p>All employee information – current and past – is at your fingertips. Your people, managers and HR share one solution to access information. With tailored screens, different personas only see relevant information.</p>	<p>Seamless data integration</p> <p>Integrate employee information with other Core HR modules, Payroll, finance and Talent Management, for a supreme HR hire-to-retain experience while making HR processes more efficient.</p>
<p>Endless flexibility</p> <p>Our people management capabilities let you create specialized fields and reports that fit your organization's needs. You can create fields for multiple absence types, inclusion, or anything else required to meet your organizational objectives.</p>	<p>Digital and automated</p> <p>Digitize and automate your processes with Unit4 Employee Management. Easily create approval workflows and forms and manage your organizational structure. Transform the way you manage changes and approvals, with the removal of paper forms, data gaps and silos within HR.</p>

Multiply the strengths of Unit4 Employee Management when used as a fully integrated part of the full Unit4 HCM solution.

Unit4 HCM supports the following functions:

 <p>Core HR</p> <ul style="list-style-type: none"> Employee management Absence management Expense management Concurrent roles Competencies & Skills 	 <p>Payroll</p> <ul style="list-style-type: none"> Payroll Dashboard Country Localizations 	 <p>Talent Management</p> <ul style="list-style-type: none"> Performance Management Employee Engagement Employee Development Employee Recognition Insights 	 <p>Compensation Planning</p> <ul style="list-style-type: none"> Multiple compensation plans Budgets and guidelines Personalized reward statements Insights and Analytics
--	--	---	---

Want to know more?

To discover how Unit4 HCM transforms your people practices, speak to your account manager, or visit our website at <http://unit4.com>.